

Amern®

RIVAL SERIES



AN-SLZ

All in one solar street light

CE (RoHS) P66 IK10

INTRODUCTION

- 01 PART ONE
PRODUCT ADVANTAGE
- 02 PART TWO
SPECIFICATIONS
- 03 PART THREE
EXPLODED VIEW
- 04 PART FOUR
PRODUCT DETAIL
- 05 PART FIVE
OPTICAL FEATURE
- 06 PART SIX
DIMENSION FIGURE



01

PART ONE
PRODUCT ADVANTAGE



Product Advantage

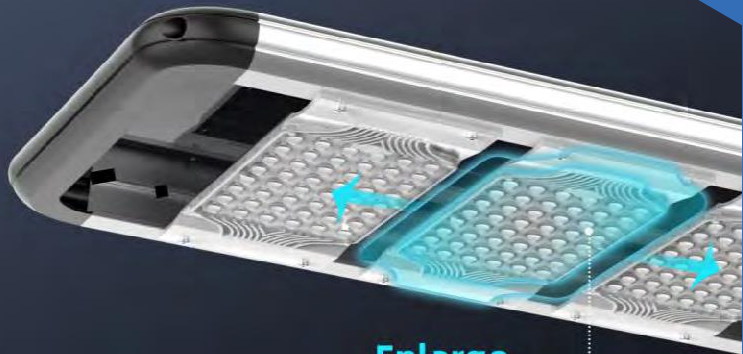
MAINSTREAM INTEGRATED STRUCTURE DESIGN

Saving transportation cost.
Easy to install and convenient
for maintenance.

DIE-CAST ALUMINUM BRACKET

High mechanical strength,
anti-wind resistance of Level-16.





Enlarge
LED Module



3030 LED chip

HIGH POWER

Enlarged capacity LED module design, equipped with high-brightness Bridgelux LED chips, improving the brightness by 30%.

REMOTE CONTROL

Four lighting modes for choice, flexible to switch via remote control.



Product Advantage

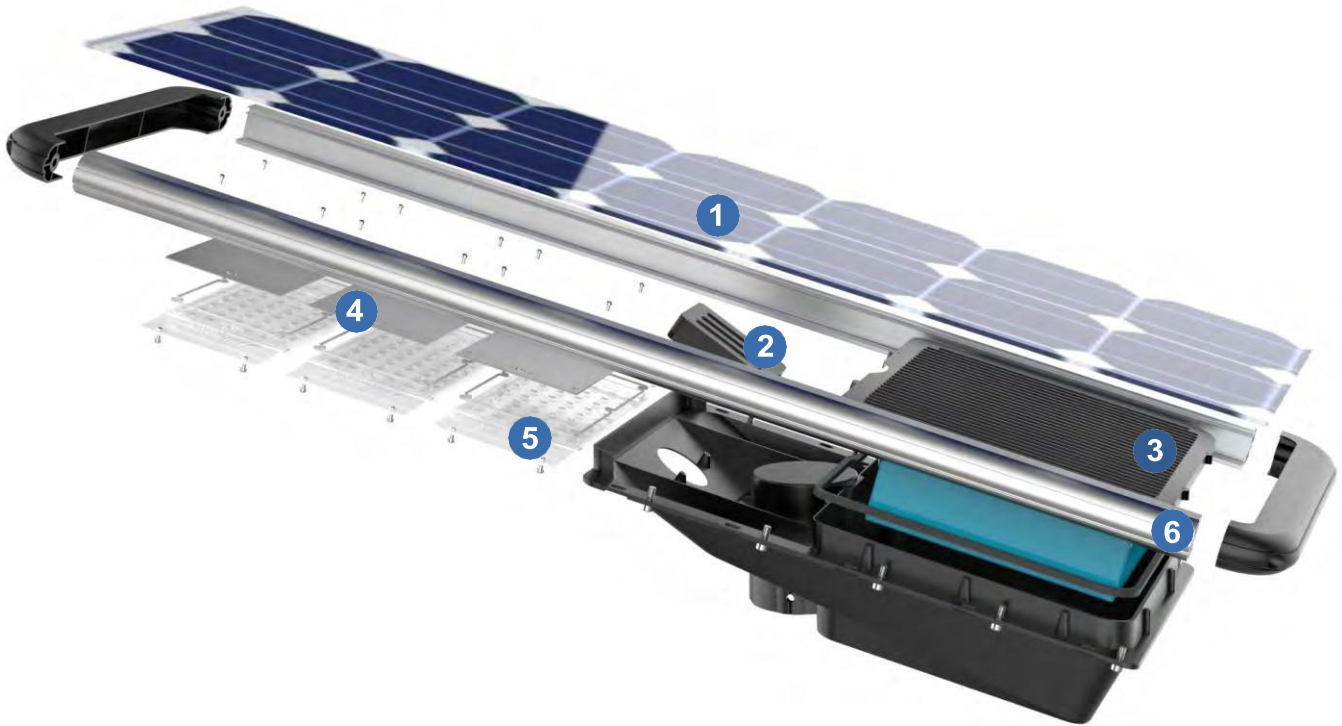
02 PART TWO SPECIFICATION

Model	AN-SLZ					
Power	40W	60W	80W	100W	120W	150W
LED	96pcs	144pcs	240pcs	336pcs	336pcs	384pcs
Luminous	210lm/w					
LiFePO4 Battery	192WH	576WH	768WH	768WH	960WH	1152WH
Mono Solar Panel	18V65W	18V80W	18V100W	18V130W	18V140W	18V160W
Solar Charging Time	8~9 hours by bright sunlight					
Lighting Time	4 - 5 Nights					
Lighting Mode	100% light control、Time control、Microwave control、Time & Microwave control					
PIR	120°, >8m					
Material Work	Aluminium alloy + PMMA					
Guard Level	IP66					
Working Temperature	-20°C to 60°C					
Size (mm)	848*385*139 1078*385*139 1548*385*139 1868*385*139 1868*385*139 2268*385*139					

Full Range of Six Products

The first choice for
engineering lighting





1 Mono Solar Panel

2 Control Module

3 LifePo4 Battery

4 LED Plate

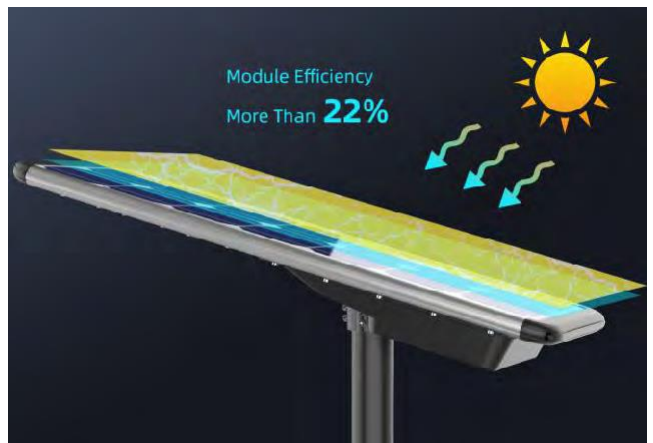
5 Optical Len

6 Die-cast Aluminum Bracket

LifePo4 Battery
Brand new and big capacity

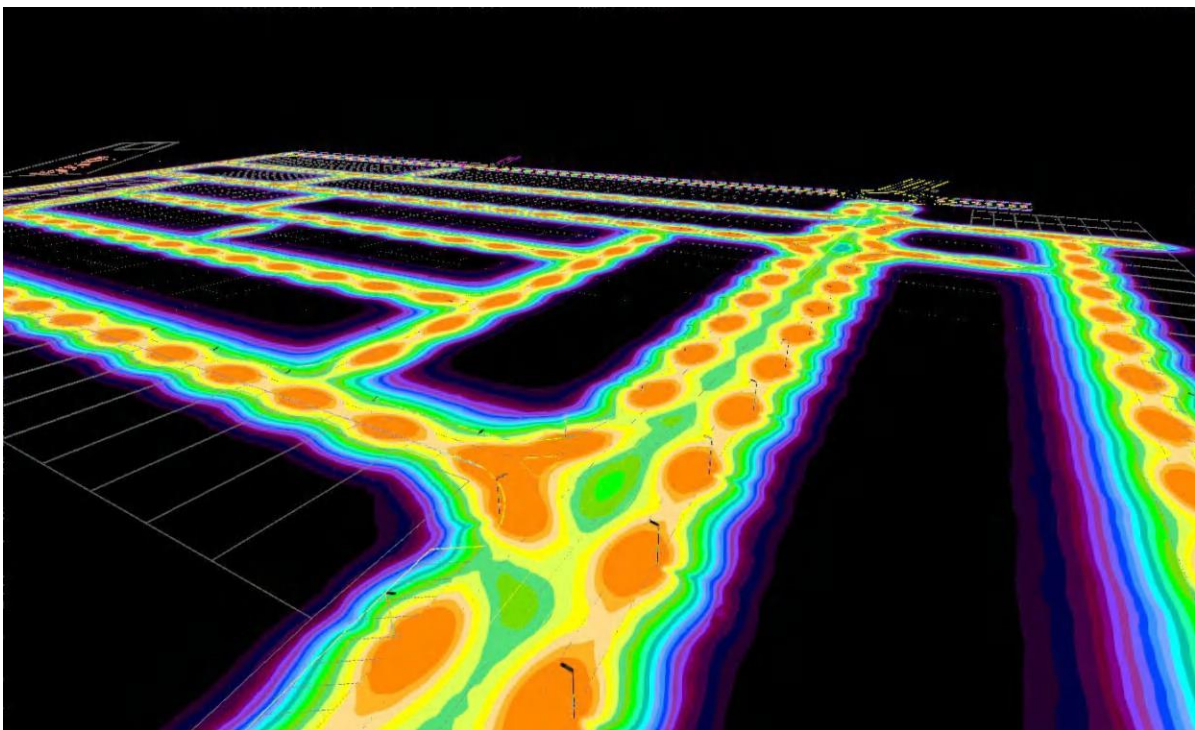
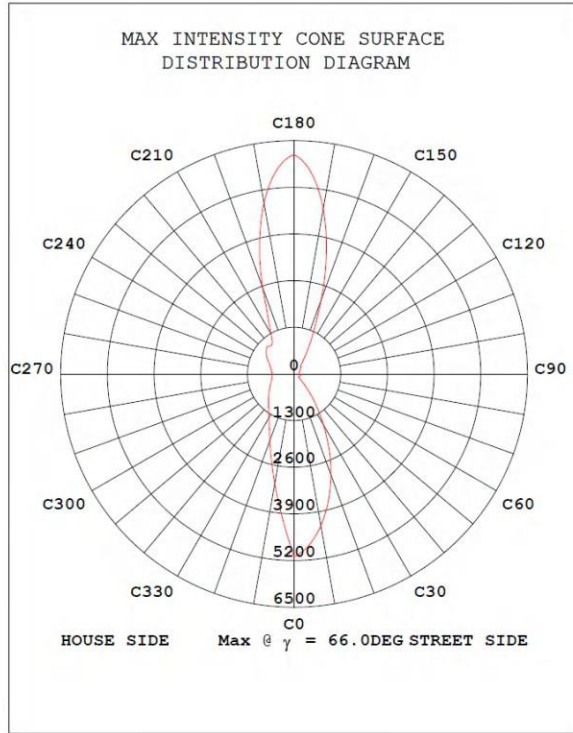
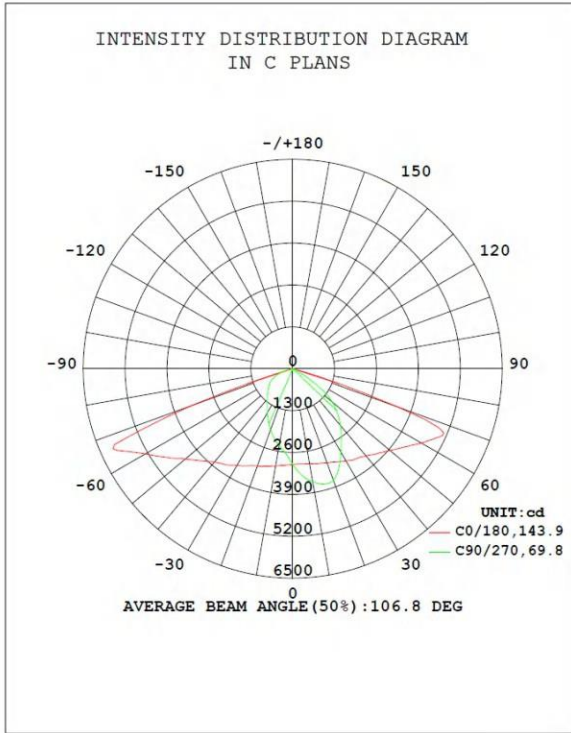


Mono Solar Panel
22% photoelectric conversion efficiency

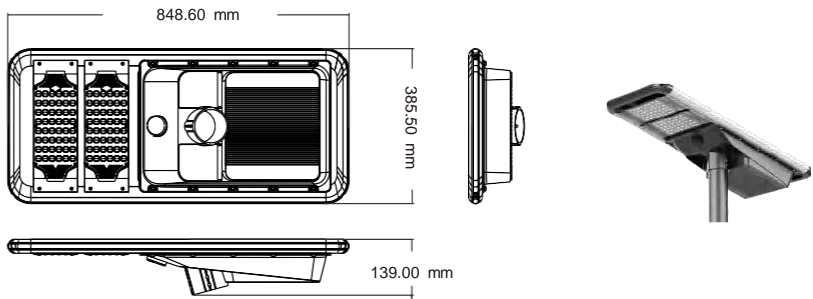
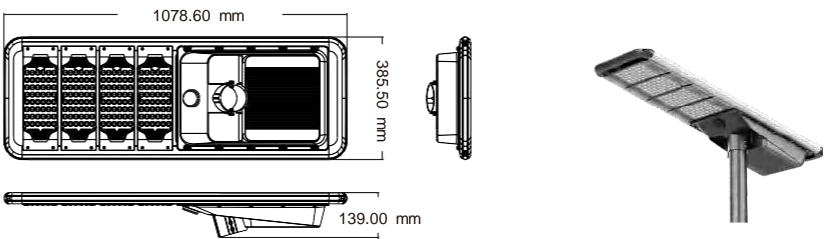
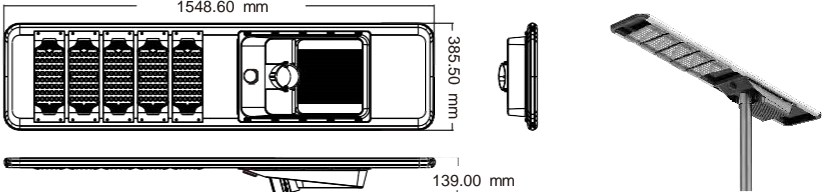
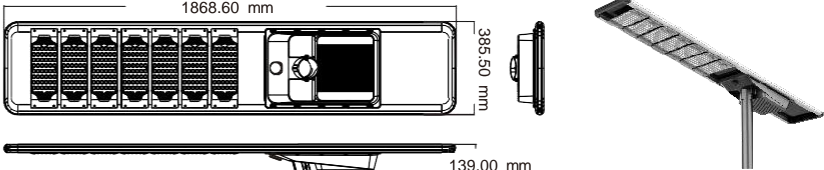


PIR Sensor
More than 8m sensing distance





PART SIX | DIMENSION FIGURE

Item No.	Solar Street Light Size
<p>AN-SLZ-40W 848.60x385.50x139.00mm</p>	
<p>AN-SLZ-50W/60W 1078.60x385.50x139.00mm</p>	
<p>AN-SLZ-80W 1548.60x385.50x139.00mm</p>	
<p>AN-SLZ-100W/120W 1868.60x385.50x139.00mm</p>	

A N E R N / S T R E E T / L I G H T

*A*mern®

THANKS VERY MUCH